

LOC I-HSP <b>108.7</b>	APP CRS <b>247°</b>	Rwy Idg <b>5600</b>
		TDZE <b>3773</b>
		Apt Elev <b>3793</b>

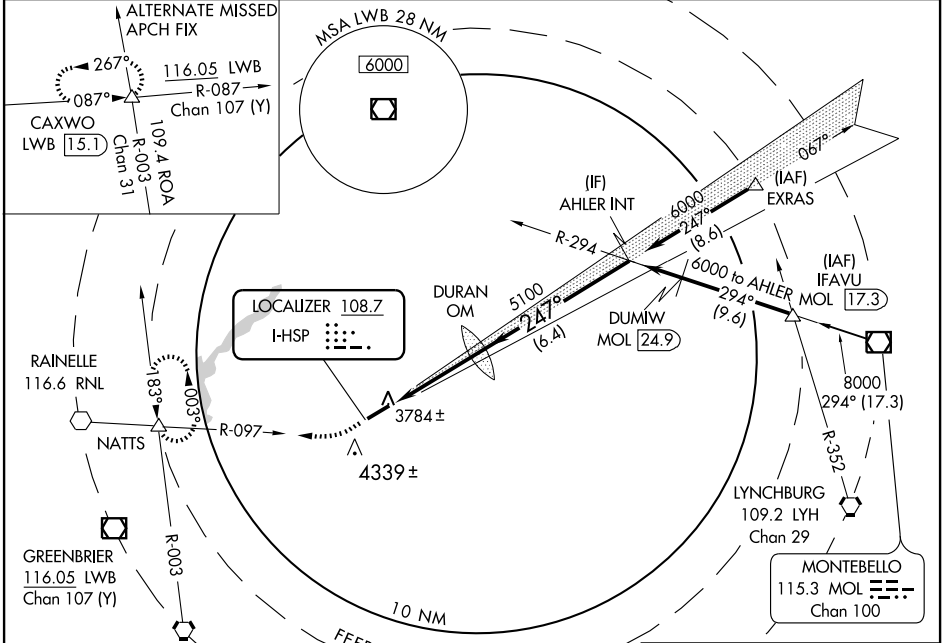
# ILS or LOC RWY 25

HOT SPRINGS/INGALLS FIELD (HSP)

**NA** Circling NA southeast of Rwy 7-25. When local altimeter setting not received, procedure NA.

**MISSED APPROACH:** Climb to 4400 then climbing right turn to 6000 via RNL VOR R-097 to NATTS INT and hold.

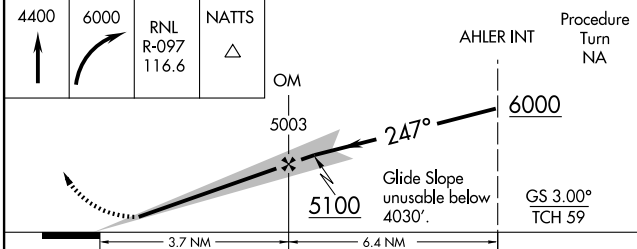
AWOS-3 <b>118.8</b>	WASHINGTON CENTER <b>134.4 353.9</b>	UNICOM <b>123.0 (CTAF)</b>
------------------------	---	-------------------------------



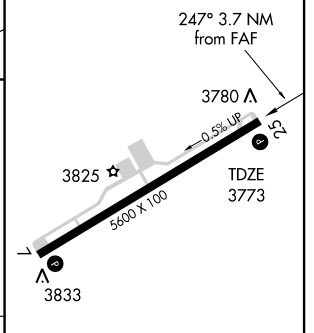
NE-3, 03 JUN 2010 to 01 JUL 2010

NE-3, 03 JUN 2010 to 01 JUL 2010

4400	6000	RNL R-097 116.6	NATTS
------	------	-----------------	-------



ELEV 3793
-----------



CATEGORY	A	B	C	D
S-ILS 25		4088-1	315 (300-1)	
S-LOC 25	4240-1	467 (500-1)	4240-1½ 467 (500-1½)	4240-1½ 467 (500-1½)
CIRCLING	4440-1	647 (700-1)	4480-2 687 (700-2)	4480-2½ 687 (700-2½)

REIL Rwy 25	
HIRL Rwy 7-25	
FAF to MAP 3.7 NM	
Knots	60 90 120 150 180
Min:Sec	3:42 2:28 1:51 1:29 1:14