

RNAV (GPS) RWY 7

HOT SPRINGS/INGALLS FIELD (HSP)

WAAS CH 86813 W07A	APP CRS 067°	Rwy Idg TDZE Apt Elev	5600 3793 3793
--	------------------------	-----------------------------	---

⚠ Circling NA southeast of Rwy 7-25. Baro-VNAV NA.
⚠ DME/DME RNP-0.3 NA. Visibility reduction by helicopters NA.
 When local altimeter setting not received, procedure NA.

MISSED APPROACH: Climb to 6000 direct AHLER and hold.

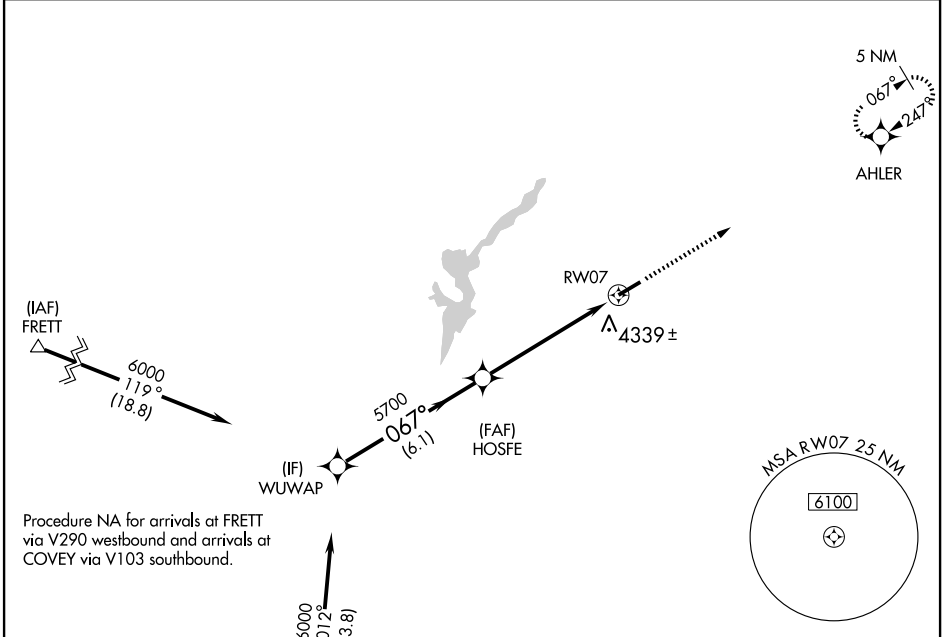
AWOS-3
118.8

WASHINGTON CENTER
134.4 353.9

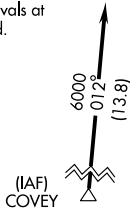
UNICOM
123.0 (CTAF) 0

NE-3, 03 JUN 2010 to 01 JUL 2010

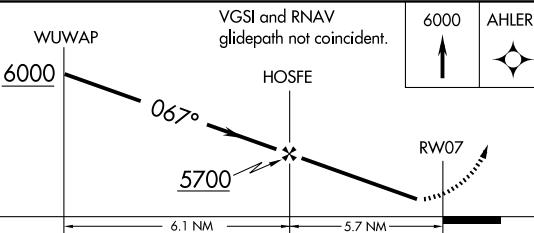
NE-3, 03 JUN 2010 to 01 JUL 2010



Procedure NA for arrivals at FRET via V290 westbound and arrivals at COVEY via V103 southbound.



Procedure Turn NA

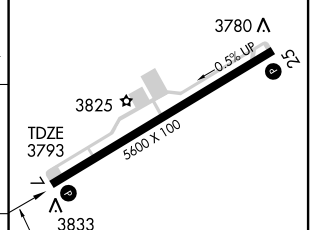


GS 3.00°
TCH 60

VGSI and RNAV glidepath not coincident.



ELEV 3793



CATEGORY	A	B	C	D
LPV DA	4143-1¼		350 (400-1¼)	
LNAV/VNAV DA	4619-3		826 (900-3)	
LNAV MDA	4700-1¼ 907 (1000-1¼)		4700-2¾ 907 (1000-2¾) 4700-3 907 (1000-3)	
CIRCLING	4700-1¼ 907 (1000-1¼)		4700-2¾ 907 (1000-2¾) 4700-3 907 (1000-3)	

067° to RWY 7

REIL Rwy 25 0
HIRL Rwy 7-25 0